

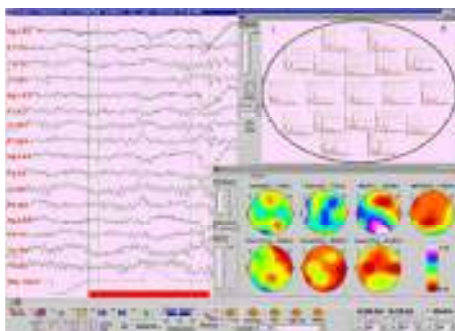
Cognitive Reconstruction is the method of reshaping the thinking processes. It's a cognitive-behavior modification that is quantifiable and effective.

Do Your Clients Suffer Form Any of the Following?

ADD/ADHD
Anxiety and Panic Attacks
Asperger's
Chronic Pain
Cognitive deficits due to Traumatic Brain Injury/Stroke
Depression
Eating Disorders
Learning Disabilities
Performance Anxiety
Post Traumatic Stress Disorder
Tension Headaches

Advances in brain retraining are occurring. By blending the results of a complete neuropsychological evaluation with quantitative electroencephalograms (QEEG) we can create treatment programs that target a patient's specific needs.

Assessment + Treatment = Improved Quality of Life



Dr. Michael Ezzo, Clinical Neuropsychologist
517-614-0798 www.MichaelEzzo.com

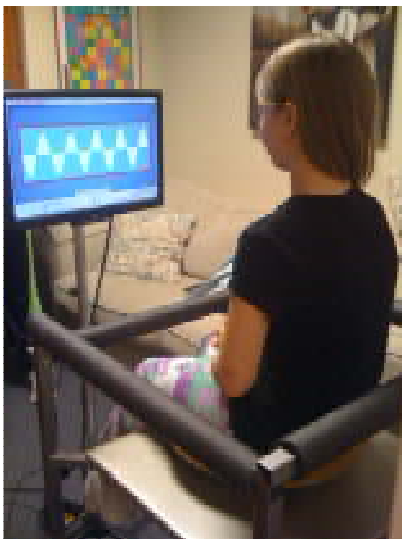


The process begins with a complete standardized neuropsychological test. The results reveal the patient's current capabilities and characteristics. Next, a QEEG is conducted to understand more about brain functioning.

The results of all the tests are combined to produce a treatment protocol which begins with the fundamentals of cognitive processing and progresses as the patient's outcomes warrant.



The key to successful treatment is targeted cognitive exercises conducted daily. With today's technology we structure treatment to be done at home. All results and symptom tracking is done throughout the day for frequent analysis and adjustment.



The advanced equipment, treatment instruments, and software are produced by Ezzo & Associates.

